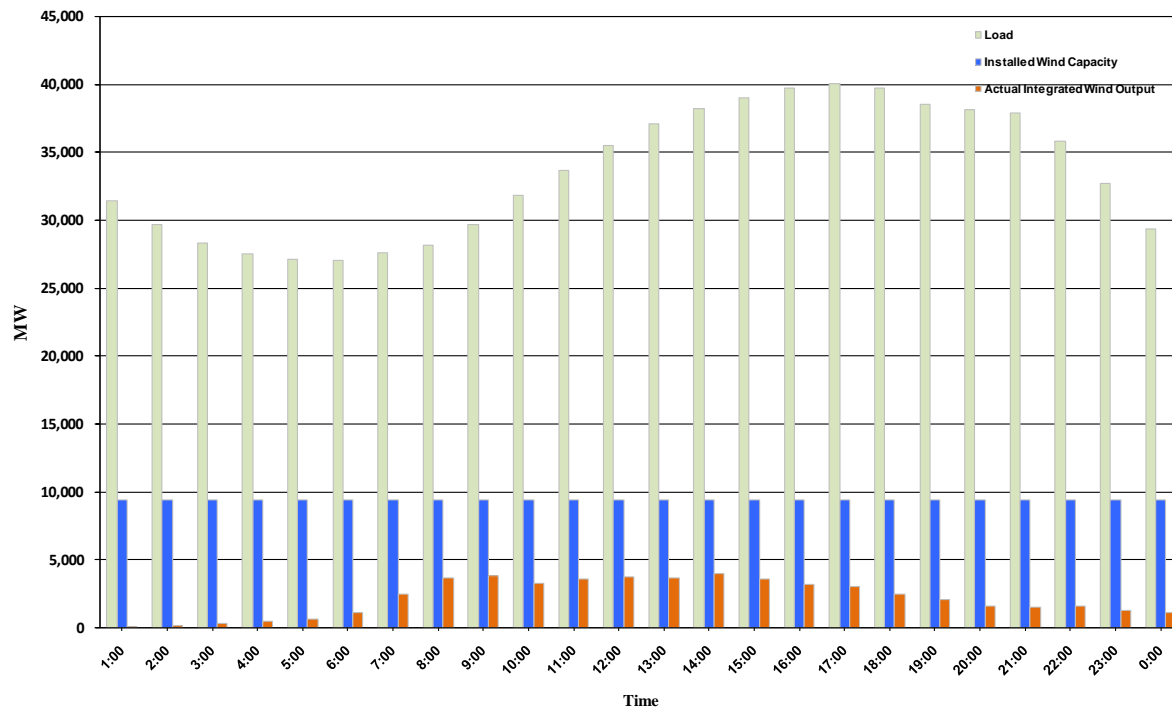




ERCOT Grid Operations Wind Penetration Report: 09/26/10

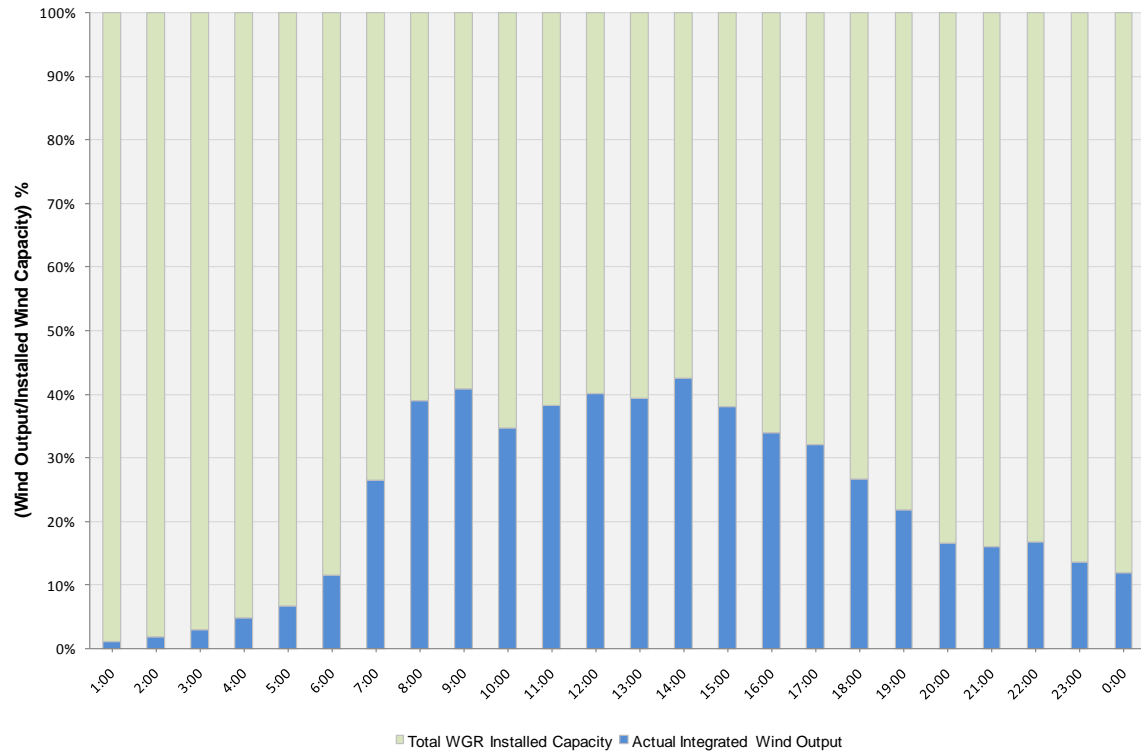
Peak Load	40,088 MW
Load Peak Hour	17
Wind Record 06/12/10	7016 MW
Max Wind value	4140 MW
Wind Peak Hour	08:14:48
Wind Penetration %	14.15

Hourly Average Actual Load vs. Actual Wind Output
09-26-2010

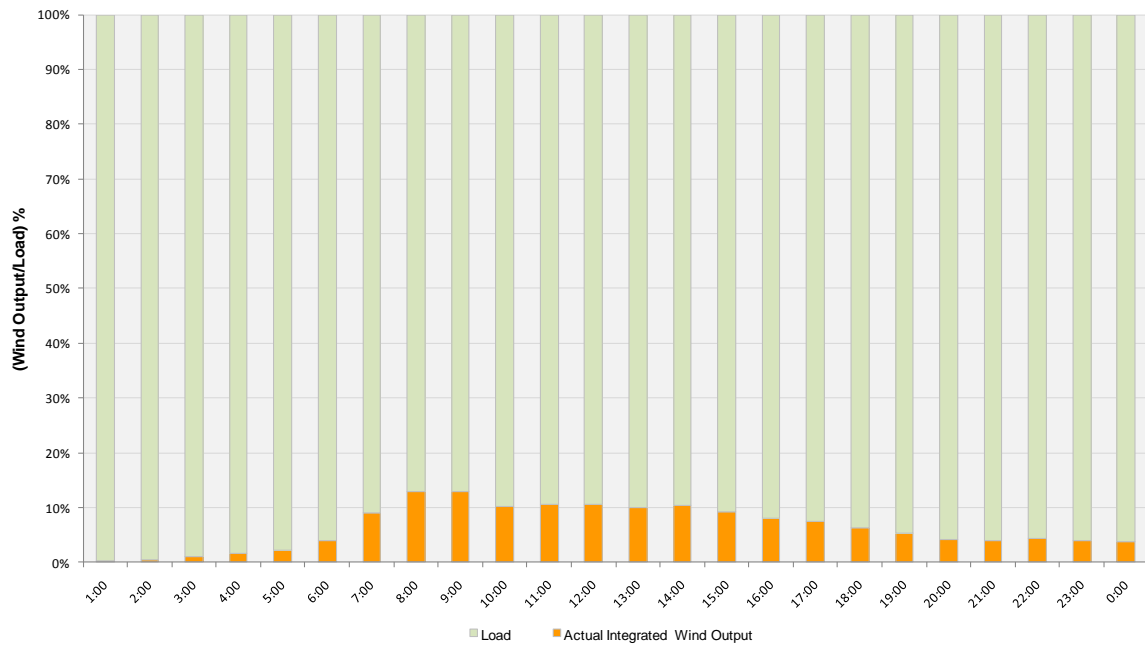




Actual Wind Output as a Percentage of the Total Installed Wind Capacity
09-26-2010



Actual Wind Output as a Percentage of the ERCOT Load
09-26-2010





ERCOT Load vs. Actual Wind Output 09/19/10 - 09/26/10

